

## **CALL FOR QUALIFICATIONS FOR JOHNSON CITY, TENNESSEE MURAL PROJECT**

The Public Art Committee of Johnson City, Tn. is seeking qualifications from artists or art teams for the commission of a mural in a pollination-themed park in downtown Johnson City, Tn.

**ELIGIBILITY:** This opportunity is open to all professional artists over the age of 18.

**BUDGET:** Up to three finalists will be selected to develop concept proposals for this project. The total project budget for the selected commission is \$16,500. Each finalist will be paid a \$500 stipend for his/her proposal. The selected artist will be paid \$15,000 for the commissioned work. Artists are responsible for own travel costs, materials, housing, and personal liability insurance. Anti-graffiti coating and wall preparation will be provided by the city.

**DEADLINE:** August 1, 2016

**QUESTIONS:** Sam Miller [sammiller@johnsoncitytn.org](mailto:sammiller@johnsoncitytn.org) 423-483-5859

---

Johnson City, with an elevation of over 2000 feet, is located in the foothills of the Appalachian Mountains. It is surrounded by farmland, undulating hills, lush valleys, and many lakes and rivers. Johnson City has an abundance of unspoiled natural beauty and four distinct seasons.

The eighth-largest city in Tennessee, with a population of 63,000, Johnson City was founded in 1856 and later became a major rail hub for the Southeast. Johnson City is distinguished as a community that embraces art, the environment, commerce, science, community, and education. It is home to a broad based economy and to East Tennessee State University.

### **PROJECT DESCRIPTION**

The goal of the mural project is to introduce lively, vibrant, and original images to our community. This will be the first mural project since the inception of the Public Art Committee six years ago. With many successful sculpture projects in

**downtown parks, we are now seeking to establish murals in downtown locations.**

**We are looking for captivating and imaginative art, which may contain sophisticated humor that conveys the dynamic energy of renewal and the sense of community developing in our downtown area. We encourage a broad and metaphorical interpretation of the pollination theme. We are looking for images that are expansive, universal and not necessarily literal.**

**While open and interested in all expressions, we find large, fresh statements that surprise and entertain us with unexpected elements particularly pleasing. Qualified artists or artist teams are invited to apply.**

## **MURAL SITE**

**Johnson City is restoring and enhancing a portion of the Brush and King Creek watersheds through the development of a new park in the heart of the city. With a focus on sustainability and storm water mitigation, the park design will allow for increased storm water storage capacity and include features such as stone walls, terraced grass areas, permeable pavement, a loop trail, glowing pathway, LED lighting, plaza areas, native landscaping and rainwater collection cisterns for irrigation.**

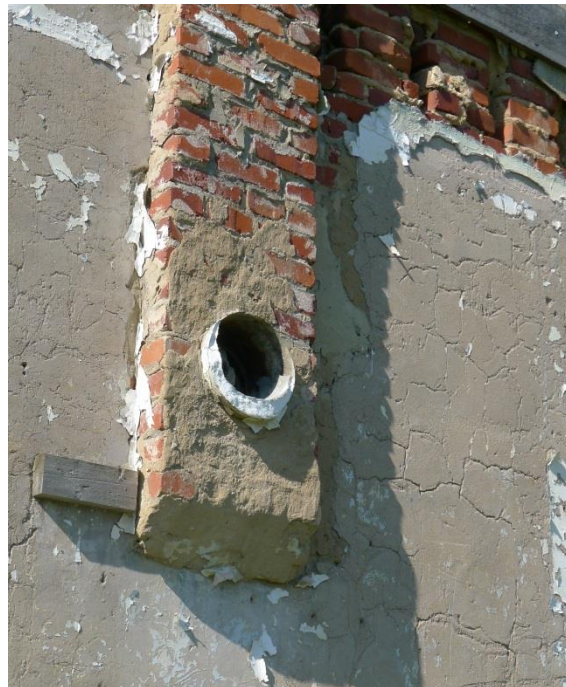
**The designated wall for the mural is located along a pollination trail and is widely visible throughout the park area. Future park components include an interactive art piece, solar panels, and a large water feature replicating the local watershed.**

**The wall offers 675 square feet (15' X 45') of useable space. Once a part of an older downtown building, the wall now stands conducive for artwork. Overall the wall is a rectangular shape, but its edges form an irregular and interesting appearance. Bricks are spaced to create a border design across the wall near the top. The left-side bricks ascend in a gentle angle while the right-side bricks create a small corner turn with uneven edges. One third of the way down from the top left corner is a 12" pipe-hole available for unique expressive possibilities.**

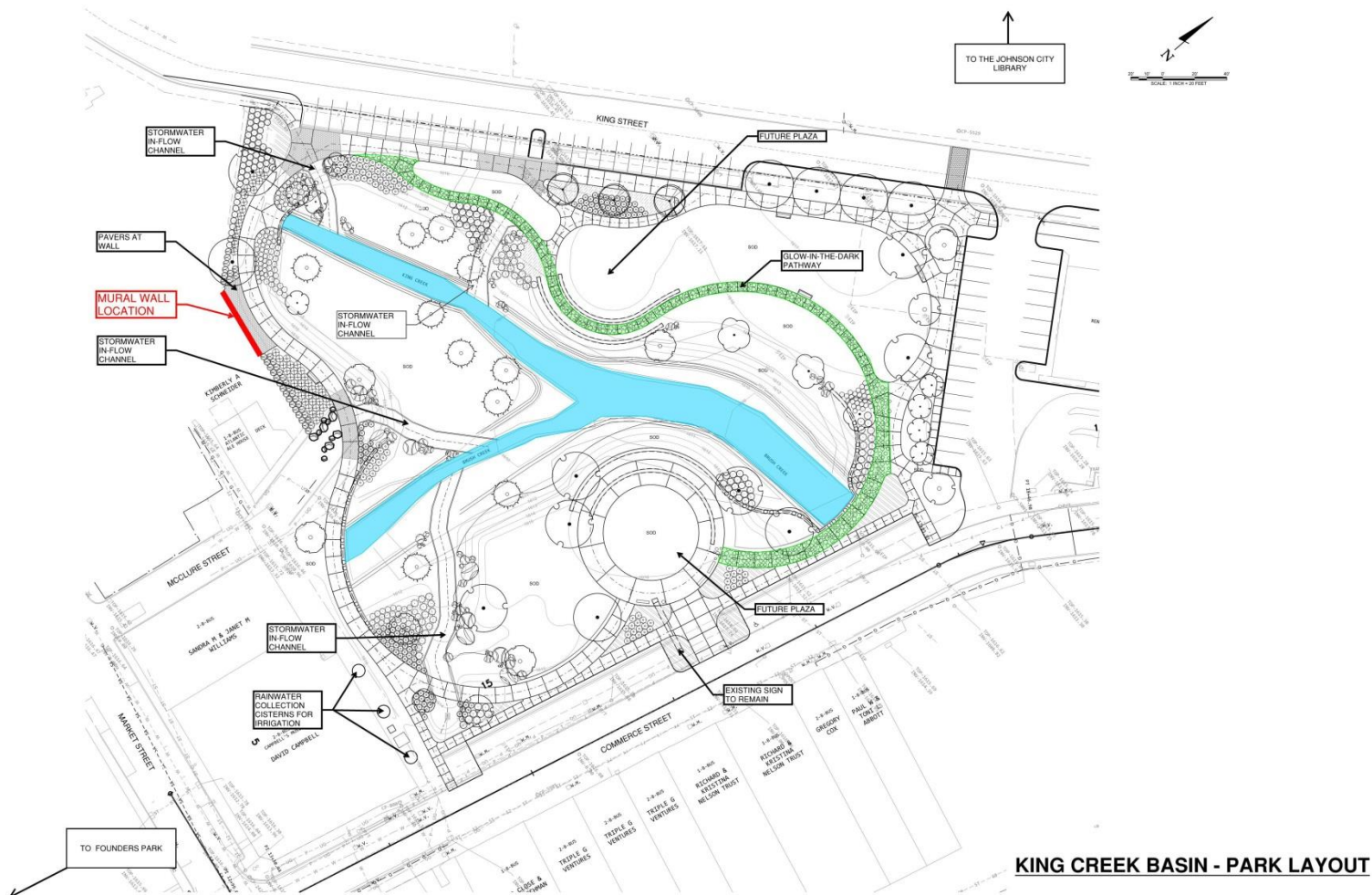
**The Johnson City Public Library and The Atlantic Ale House border the park area. Within walking distance are inviting destinations such as Founders Park, the Farmers Market, and a variety of specialty shops and restaurants. Because of the wall's central location, the mural will be a focal point of cultural events, celebrations, concerts, performances, and family and children's activities.**



**PHOTOGRAPH OF POTENTIAL MURAL WALL**



**PIPE HOLE FEATURE**



## SITE MAP

## SELECTION CRITERIA

A Public Art Selection Panel will review the qualifications of applicant artists and make recommendations to the Johnson City Public Art Committee. The Selection Panel includes artists, arts advocates, curators, administrators, project partners, and other arts and community development specialists. Their selections will be based on the following criteria:

- Artistic excellence as demonstrated in 10 digital images of the artist(s) previous work.
- Evidence of working in the mural field on large masonry surfaces
- Experience working in community settings
- Experience working on large scale projects involving heights.

- Willingness to meet all contractual guidelines.
- The use of content appropriate for all audiences
- Ability to interact with public for educational purposes
- Responsiveness of artist to environmentally friendly materials.

**SUBMISSION GUIDELINES:** (submit a digital portfolio) 10 digital images of previous art work; artist's resume'; contact information for 3 professional references.

#### **ANTICIPATED TIME LINE**

- Deadline for application August 1, 2016
- Notification of three finalists September 15, 2016
- Proposals Due October 15, 2016
- Final artist selection November 15, 2016
- Installation of the mural will be scheduled in consultation with the selected artist. The Public Art Committee would like for the mural to be completed by June 1, 2017. When submitting your RFQ, please confirm that you can work within this timeframe.

#### **LIST OF RESOURCES**

Phil Pindzola [ppindzola@johnsoncitytn.org](mailto:ppindzola@johnsoncitytn.org) 423-434-6080

Jennifer Salyer [Jennifer.Salyer@bwsc.net](mailto:Jennifer.Salyer@bwsc.net) 423-723-8448

Submit a digital packet at <http://www.johnsoncitytn.org/art/> under the "Call For Entries" tab.